



*Floreat Etona*

November 2021

Issue 26

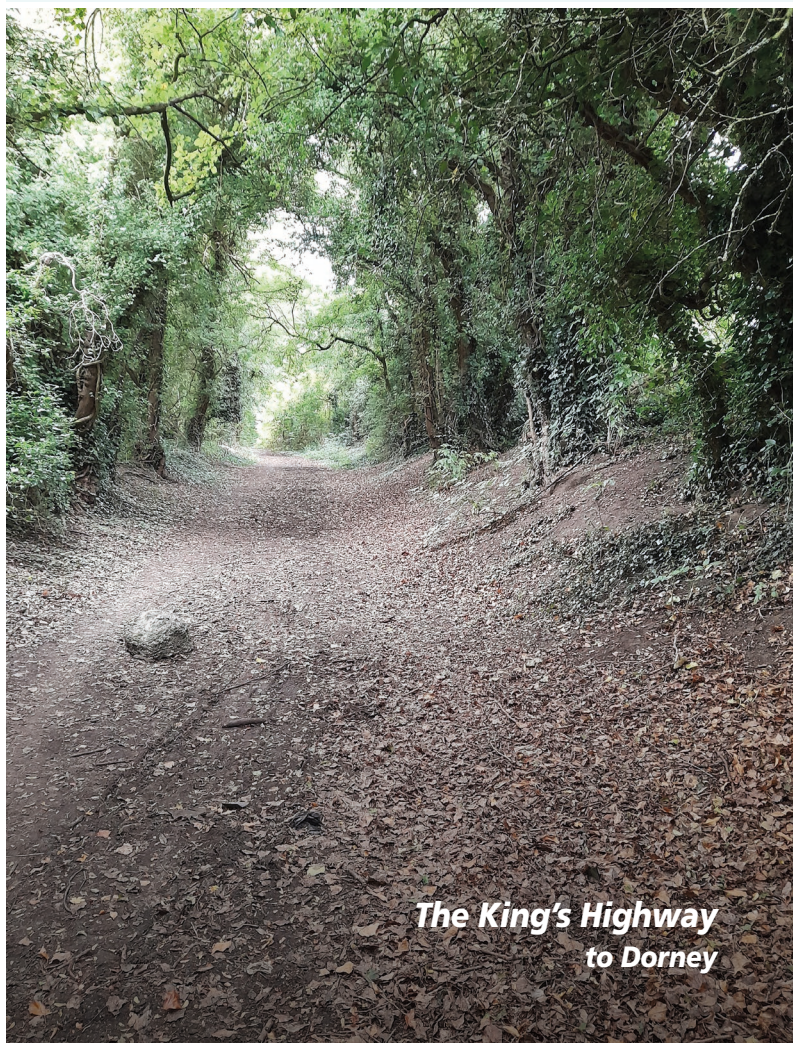
# Eton *Matters*

***Eton's  
Milestones***

***Teaching  
the Teachers***

***Great  
Uncle Ben***

***Eton's  
Cemetery***



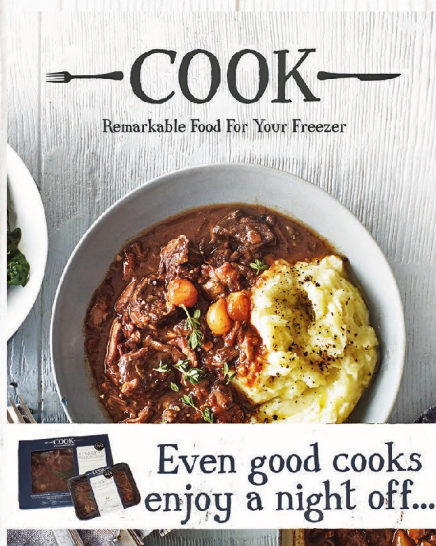
***The King's Highway  
to Dorney***

An Eton Community Association Publication

# Available in store now

## NEW Gluten-free range

bread, biscuits, pasta, cereal, home baking & more



Mon-Sat 7am-10pm  
Sun 10am-5pm

**COSTA**  
EXPRESS



**KAVANAGH'S**  
**Budgens**

124A High St  
Eton SL4 6AN

## Chair's Chat

Ros Rivaz - ECA Chair



I am delighted that we have managed to hold face to face Eton Community Association meetings again. We owe a thank you to Will at Windsor & Eton Brewery who has allowed us to use the Hop House at The George, where fresh air can flow through the open French windows on 2 sides of the building, reducing the COVID infection risk.

The pandemic continues to influence so much of what we do, both as individuals and as a community. However, holding litter picks, enjoying pub walks and a beer tasting have all been possible because the format has allowed social distancing and fresh air. Thank you to those who have organised and supported the events!

A new activity this summer was the anti-social behaviour support. Contributions from residents, Eton Town Council and a grant from RBWM enabled us to ensure security personnel were present on the Brocas and the High Street on most Friday and Saturday evenings through the summer. We took a while to find the best way of conducting this work, but it made a difference. We worked with the RBWM teams and Thames Valley Police, although the teams are incredibly stretched.

The Christmas annual event planning is well progressed; note 18th November in your diaries when we launch our High Street as a place to buy gifts for family and friends! The planning is ongoing for the Her Majesty the Queen's Platinum Jubilee Eton Street Party on 4th June 2022; another date to pencil in! if you want to help, please email [secretary@etoncommunity.co.uk](mailto:secretary@etoncommunity.co.uk).

### Forthcoming Eton Community Association Meetings

Dec 1st or 8th and Jan 12th or 26th Dates/Venue to be confirmed

**I would like to thank** the regular and guest contributors and the sponsors of this issue of Eton Matters, without whose generosity we would be unable to produce this mini-mag. The sponsors are: Kavanagh's Budgens, New & Lingwood, Warren Property, J Manley Gallery, Richer Sounds, Academy Insurance, Vario Press, Beechwood Interiors, Fresh 'N' Fine, My Handyman, Eton Cycles, Salamandra, Eton College, Maydencroft and Eaten Cafe. **Peter Eaton, Editor**

### Eton Community Association and Eton Matters Information

ECA Chair - Ros Rivaz- [chairman@etoncommunity.co.uk](mailto:chairman@etoncommunity.co.uk)

ECA Secretary - Leonie Bryant - [secretary@etoncommunity.co.uk](mailto:secretary@etoncommunity.co.uk)

ECA Treasurer - Malcolm Leach - [treasurer@etoncommunity.co.uk](mailto:treasurer@etoncommunity.co.uk)

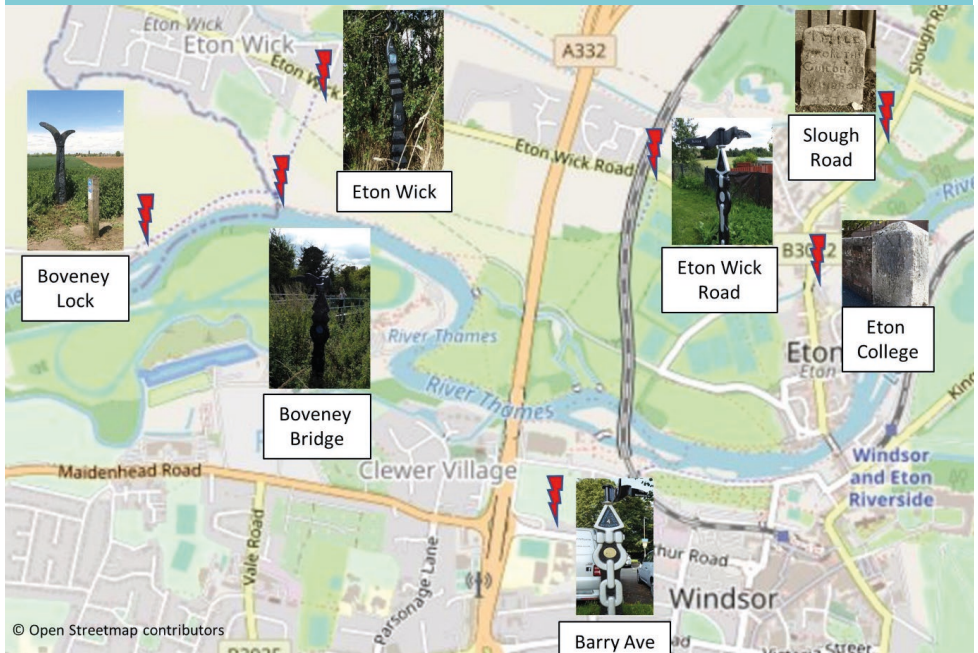
EM Editor - Peter Eaton - [editor@etoncommunity.co.uk](mailto:editor@etoncommunity.co.uk)

**Disclaimer and Copyright:** The Eton Community Association has taken every care in compiling information and materials but will not be held responsible for any loss, damage or inconvenience caused as a result of any inaccuracy or error contained in this publication. The accuracy of material provided by contributors or from third party sources can not be assured and is likely to be copyright of the author and therefore permission to use or copy such material must be sought from the author. The Eton Community Association does not endorse any web sites, services or products mentioned and can not be responsible for the content or privacy policy of external web sites.



# Eton's Milestones

David Tredor - Eton Resident



You probably pass by one of Eton's milestones every day without a second thought. And why would you? For two of the seven in Eton (or hereabouts) their purpose to guide the traveller has long since been overtaken by google maps: one is on the Slough Road bearing the inscription, "1 mile from the Guildhall Windsor 1872"; the other is on the Long Walk at Eton College with the inscription, "XXI Miles from Hyde Park Corner 1817"

The remaining five are part of 1000 put in place on national cycling routes funded by the Royal Bank of Scotland's Millennium Mileposts project. Locally, we see three of the four designs that were commissioned: the "Fossil Tree" stands at Boveney Lock, "The Cockerel" is in Eton Wick (although well hidden) and "The Rowe Type" with its directional fingers can be seen on the Eton Wick Road, at Boveney Bridge and on Barry Avenue in Windsor.



On each of the Millennium Mileposts is an engraved "Time Trail" metal disc with pictures and letters which make up a kind of treasure hunt on bikes. There are sixty to collect and once assembled you provide enough information to solve the puzzle and claim the treasure.

Few people have got close. Could you be one to solve it?





## ETON COLLEGE COLLECTIONS

ARCHIVES, ART, LIBRARY & MUSEUMS

### Museum & Gallery Openings

On Sunday Afternoons, the Museum of Antiquities, the Museum of Eton Life, the Natural History Museum and the Verey Gallery are open to the public on Sunday afternoons, **2:30 — 5:00pm**.

Visits are **free** and you are welcome to **drop in** anytime during opening hours. For further information about our upcoming **exhibitions**, please see:

[collections.etoncollege.com/visit-us/](http://collections.etoncollege.com/visit-us/)



*Henry VI*

**Henry VI** | Verey Gallery |  
8 November 21— 8 May 22

**A Victorian Legacy: Anne Thackeray Ritchie—Life & Writings** | Tower Gallery |  
14 Oct— 10 April 22



Eton's Bard: Thomas Gray and his Elegy

**Eton's Bard: Thomas Gray and his Elegy** | Eton College Library & Online | October—November 2021

 **salamandra.uk**  
animation studios

unpack your  
business potential  
with animation...



# Town & Gown

From the first day I moved to Eton back in 2006 (from Harrow, no less!), I felt so fortunate to be able to live and work in such lovely surrounds, and I quickly discovered the very friendly and supportive local community. Within no time, smiling faces on the High Street became familiar and it soon felt entirely normal to stride along wearing 'school dress', the hours spent learning to tie a white bow tie long forgotten, going from one historic building to the next, whether tailor shop, pub, chapel, or schoolroom (although not necessarily on the same trip out!). It certainly is all too easy to forget sometimes how unusual this place is, and just how lucky we are as residents to be a part of it.



For me, the coming together of the old and the new is what makes Eton so special and brings it to life. The old is there in the stunning architecture, chapel bells, penguin suits, stories, and traditions. The new comes with every fresh and welcome wave of pupils, staff, town residents, shops, and cafes, all finding their place in the community for the first time. Is there a record for the most cafes on a single street and, if so, does Eton win I wonder? (Google doesn't offer much help with that question, but they all seem to be doing a roaring trade, so I say we claim it!)

In my role leading digital education at Eton College, the secret also seems to be found in balancing the old and the new. In a school fast-approaching the whopping milestone of racking up 600 years of history and tradition, it is essential that we preserve high-quality, tried-and-tested schoolroom practices. Equally, we must be open to harnessing the potential of game-changing innovations and new technologies, all the while empowering staff and pupils in the process.

Although the journey of blending tradition with innovation has largely been a gradual one, the dark Covid-19 cloud that still hangs over us required everyone to rapidly learn new digital forms of communication and online approaches to teaching and learning. At Eton today, in part supercharged by the pandemic, masters and pupils now routinely use iPads and powerful learning tools such as OneNote, Teams and Nearpod to enhance the educational experience. There is another side to this though, as 'Lockdown learning' also underlined the value of the relationships we have with one another. Part of our children's education must be for them to learn that technology should not get in the way of real human connections, and they must proactively seek the right balance

## James Stanforth

*Director of Digital Education, Eton College & Eton Town Councillor*

between reaping the many benefits that innovation can bring whilst maintaining healthy and essential social contact.

When used well, it is not hard to see the positive difference technology can make and the potential that it has to transform aspects of our lives for the better. In my time at the College so far, I am particularly proud of the work that our 'IT Outreach' pupils have done in building online solutions for local charities, including the Windsor Homeless Project. The objective each time is to harness technologies that can minimise or automate admin and paperwork in order to maximise the opportunity for volunteers to connect on a human level and have an even greater impact in the remarkable work they do.

For my part, it is a privilege to have been recently co-opted on to the Eton Town Council, and I look forward to connecting with and serving the community in the months and years ahead. My role will undoubtedly entail doing my bit to help the Council continue to take advantage of technologies to support our community in new ways. Putting my geekdom to one side though, the human, face to face contact that we have with one another will always be the most important aspect of life in our treasured town. So, let's meet up for a coffee... but which café shall we go to? Decisions, decisions...



At the end of June Eton Porney School celebrated the official opening of their new outdoor classroom which was supported by The Baldwin's Bridge Trust and Eton Community Association and named after earlier Trust member and Eton councillor, Winnie Hay. Green Eton Group also spent time this summer tidying the school garden.



# *J Manley Gallery*

*Established 1891*

## *Framing and Restoring Fine Art for over 100 Years*

We offer a personal service of the highest standard on all your Framing requirements and our Restoration team provide a wide service in Fine Arts including Oil and Acrylic painting Watercolours, Pastels, Engravings and Prints.

We also restore Ceramics  
(Porcelain - China - Pottery).

All work is undertaken at our premises in Eton

**27, High Street, Eton, SL4 6AX**

**Telephone 01753 865647**

**[www.manleyrestoration.com](http://www.manleyrestoration.com)**



**Create your own salad bowl  
or sandwiches from a choice  
of over 20 fillings**

**Hearty selection of cooked  
breakfasts served daily**

**Gluten free, Vegan and  
Vegetarian options**

**Delivery & take-away  
service available**

**Exclusive 'Eton-Mess' ice-  
cream freshly made on  
premise**



**Lockdown Hours: 1000-1600  
seven days a week**

**Jacket potatoes with a  
choice of up to 3 fillings**

**Fully Licensed - Beer, Wine  
Liqueur Coffees and Bailey's  
Hot Chocolate**



**The Eaten Cafe, 45 High Street, Eton, Berkshire, SL4 6BL  
T: 01753 864725 E: [www.eatencafe.co.uk](http://www.eatencafe.co.uk)**



# Teaching the Teachers

*Jane Speller - Eton Resident*

Monday, 15th February 1971 saw the UK change over to the decimal monetary system. No longer any pounds, shillings and pence. My father decided, in the middle of 1970, that our family should become acquainted with the new currency so we could help our customers in Tudor Stores when the changeover happened. A card game called Snip Snap helped enormously.



From time to time my mother would take pity on a Batchelor Colony of Young Eton Masters living over, what was then, Westminster Bank, inviting them to dinner. At the time they mostly lived on canned food and salads. After a fine dinner, my mother was an excellent cook, the Eton Masters were asked if they would like to play a card game. They acquiesced. My mother produced the cards and explained that we would be playing Snip Snap a variant of Snap.

It turned out to be the slowest and funniest game of cards that we ever played. There were two crib cards showing the value of the decimal currency against the soon to be old coinage. The first round was, of course, the slowest. As we suspected none of the chaps had given any thought to the changeover. So, every time a card was put down there was a hurried consultation of the crib card, with 'wait on a minute, hang on a minute', being called out before we moved on. Basically, if two cards of the old coins turned up you had to shout Snap! Two of the new coins Snip. One of each type, for example 10p and 2 shillings, then you called out Snip Snap. The lower dominations were the trickiest. It sounds easy. But not when you are unused to the new coins and the conversion. Soon there were shouts of Snip... No Snap... no it's Snip Snap... being called out thick and fast around the table as the Eton Masters got used to the game and we speeded up considerably.

As they were leaving, they told us that they had not realised how unready they were for decimalisation and that they were going to spread the word to their colleagues. They were grateful for the several games of cards they had played, although they did confess that they had raised their eyebrows when asked by my mother if they would like to play a game of Snap!

# Naturewatch - Food for Thought!

Phil Stone

We are lucky In Eton being surrounded by meadows, trees and hedgerows with the River Thames bordering and streams around our small town. Looking at this idyllic landscape it is difficult to see what has changed over the years and in fact, as much of it is protected by Commons Law, in appearance, there has been little change since our ancestors lived more in harmony with nature.



However, actually much has changed and something very noticeable in nature; *the butterflies have gone!*

When I was a kid there was a butterfly bush at the bottom of the garden, which, when in summer flower, was covered with butterflies feeding on the nectar and on the stinging nettles in the field; cluster of caterpillars of the small tortoiseshell and peacock butterflies were feeding. Today I have a butterfly bush at the bottom of my garden but butterflies visiting for the nectar are few and far between and on the stinging nettles; not a caterpillar to be seen.

Cows no longer graze part of the year on the Brocas replaced by heavy machinery to cut the grass instantly. That's good isn't it as at least you don't have to dodge the cowpats to find a picnic spot? *But the butterflies have gone!*

The crops in South Field are weed and pest free having been sprayed with herbicides and pesticides. That's good isn't it as they are more productive to feed our growing population? *But the butterflies have gone!*

Planes fly overhead every couple of minutes. That's good isn't it as we can jet off to the sun when we like to refresh our lives? *But the butterflies have gone!*

Our homes are centrally heated giving us comfort. That's good isn't it as we are not all clustered around an open fire or waking to ice on the inside of the windows on a winter's morning? *But the butterflies have gone!*

Our cars fill the roads taking us anywhere anytime. That's good isn't it as it is convenient and makes our lives more pleasurable? *But the butterflies are gone!*

Most of us enjoy the numerous benefits of modern life but, **food for thought; the butterflies have gone!**



Our regular Naturewatch contributor, George Fussey, has decided to put down his pen. The ECA would like to thank him for his wonderful articles and his support for Eton Matters during the last 8 years.





NAVIGATING MARKET RISK



VALIDUS

Specialists in Market Risk Advisory and Management

[WWW.VALIDUSRM.COM](http://WWW.VALIDUSRM.COM)

119-120 High Street Eton SL4 6AN

(0) 175 338 6548



## *Eton Porny School*

*Katherine Russell*  
*Head Teacher*

It has been a pleasure to welcome our children and families back to school this academic year and get back to some of our 'usual' routines as well as embracing some of the changes that we decided to keep based on feedback from the children.

Our Early Years children have wowed us with their smooth transition into school and it feels like they've always been here. They are happy, curious and ready to embrace lots of new learning opportunities.

We are working hard to re-develop strong, meaningful links with our local community and can't wait to be back out and about engaging with our new projects.

Our PTA have worked so hard to continue their fundraising for the school and have now also been awarded charity status. The funds that they raise are so important to support the school and help to further improve the children's experiences. Most recently they have generously funded some exciting new wooden tunnels for the garden, a range of playground toys, new books for the school library and a **WHOLE SCHOOL TRIP TO THE BEACH!** We were all very excited for the trip and enjoyed being able to have fun together as a whole school. If you think your business could support us in any way with fundraising please do get in touch.

Don't forget that you can keep up to date with all of our exciting learning and adventures on our school Twitter account @EPFirstschool.

## *Teen Talk*

*Luke - Aged 17*



My name is Luke Weston and I have spent all my life (17 years) living in Eton so I can speak first hand about the long list of benefits it provides to both its residents and visitors. Firstly, the sporting opportunities are vast. Football, tennis, swimming and rowing are just a few of the local options, providing kids with the opportunity to take part in activities outside of school. On top of this, a unique, vibrant atmosphere can be felt throughout the High Street and also as you venture further into the historic world-renowned areas of Eton College. Despite its 'village-like' feel, you are just a train

journey away from London city. Being so close to London allowed me to experience all the best parts of both village and big city life.

## *Kid's Play - Preventing Plastic Pollution*

*Chloe - Aged 10*

Hello! My name is Chloé, I'm 10 years old and I live in Eton. I go to Eton End School in Datchet and I'm proud to be part of the EEPPF (Eton End Plastic Pollution Force) because our world is a very important place, so it is our job to protect it. No matter what you do to help it will make a big difference. So, maybe everyone could try and reduce the amount of plastic they use and consider other ways they can make a difference? You could go litter picking, recycle and put things in the right bin, choose to buy products that don't have plastic packaging to encourage shops to adopt more environmentally friendly packaging, use reusable water bottles and containers, and try to use the car less. Please spread the word to family and friends because together we can save our beautiful planet!



## *Eton Pre-School*

*Sue Clifford - Manager*



Well I'm not sure if any of us had much sunshine over the Summer break? But at Eton Pre-School rain doesn't stop play. There is a famous saying that goes "there is no such thing as bad weather, only unsuitable clothing!" The children all have access to a waterproof suit and the staff have lots of weatherproof items too! This means that we never say "no" to going outside. We love get-ting stuck into puddle splashing and water play or even just watching the rain drops. We go out and enjoy the fabulous space we have in our large garden. We don't mind going out when the sun shines too!

Why don't you come and see what we have on offer in the sunshine or in the rain? @etonpreschool.org



# *In His Presence*

*Rev. La Stacey*

*Vicar, St. John the Evangelist Church*



Where do you look for wisdom? Do you do a quick Google search? Depend on Wikipedia? Check out YouTube? Do you put a post on Facebook and wait for the answers to flood in? Where is wisdom in this age? Where would you go for depth of understanding? For good debate? For knowledgeable and authoritative guidance?

I had a Sabbatical at the start of this year – three months where, rather than travelling and seeing exciting new places or catching up with old friends, I was forced to stay in one place and go no further than my own two legs would carry me. The Benedictines talk of ‘stability’ as one of their disciplines in seeking God. It means being committed to the place and community where they are. In that stillness and commitment, depth is found. I decided that, rather than think of the constraints of the strict lock-down period last winter as a frustrating inconvenience, I would take the path less travelled perhaps, and dare to enter a bit more intentionally into the stillness and quiet of contemplative practice. What a gift to have a period of enforced stillness to make this exploration.

I found large swathes of thought and writing in which to wander. A wide new country opened up. Long practiced ancient traditions of Christian contemplation seem often to be passed by in our rush for relevance and rationalism. This was a moment to rediscover and dwell in them. You enter a world beyond binary thought patterns, beyond fear-induced protectiveness. You find a unified place where you can rest awhile and just ‘be’; where it is fine for others just to ‘be’ too. There is creative energy here and renewed hope.

Actually, wisdom can be found on the internet: look up Fr Martin Laird, ‘Into the Silent Land’. His book, he says, ‘proceeds from an ancient Christian view that the foundation of every land is silence, where God simply and perpetually gives Himself. This self-gift is manifested in the creation, in the people of God and their inspired (if stumbling) pursuit of a just society, and most fully, in the Christian view of things, in Jesus Christ’ (p6). His is one of the books I used for guidance in my enforced period of ‘stability’.

As one translation of the Christmas gospel might read, ‘Wisdom grew legs and walked among us, full of grace and truth.’ It is worth seeking wisdom here, in the ancient story of incarnation. On Tuesday nights in Eton Church, as we approach the Christmas season, we are working with some of these ancient contemplative practices. Do get in touch if you are interested.

With blessings. La

For Regular and Seasonal Services see Diary on Page 16

# NEW & LINGWOOD

118 HIGH STREET, ETON, SL4 6AN



01753 866286

07496 457663

[WWW.NEWANDLINGWOOD.COM](http://WWW.NEWANDLINGWOOD.COM)

# Diary

## Nov

14th	10.55 – Remembrance Service – St. John the Evangelist, Eton
18th	18.00 - Christmas Carols – Eton College Chapel – (tickets required) followed by procession to
	19.00 – Christmas Lights Switch-on – Jubilee Square

## Dec

1st or 8th	18.30 – Eton Community Association meeting – Date/venue tbc
5th	18.00 – Community Carol Service – College Chapel (Tickets not required)
12th	15.00 – Advent Carols – St. Mary Magdalene, Boveney
19th	16.00 – Family Carols – St John the Evangelist, Eton
24th	16.30 – Christingle – St John the Baptist, Eton Wick

## Jan

12th or 26th	18.30 – Eton Community Association meeting – Date/venue tbc
--------------	---

## Regular Events

**Council Office** – Eton: Tues – Fri – 08.00-13.00 (in office Tuesday & Friday)

**Charteris Club** – Lunch Tuesdays & Wednesdays - 12.00-14.00 – Eton Wick Village Hall

**Eton College Museums** – Every Sunday – 14.30-17.00 – Free entry

**Eton Town Council Meeting** – 19.00 - First Thursday of Month - Eton Council Offices

**Churches** (regular services)

**St. John the Evangelist, Eton (C of E) Services**

1st & 3rd Wednesdays - 10.00 - Communion (said)

Tuesdays – 9.15-11.30 Community Bible Study

(Sundays – 11.00 & 16.30 Services - St. John the Baptist, Eton Wick)

**Our Lady of Sorrows (Catholic)** - Service – Sundays – 09.30

## *Eton Connection - Harry Potter and Eton - Brian Hoare*

Contrary to the belief of some Muggles<sup>[1]</sup> albeit a misinformed minority, Harry Potter was not educated at Eton. Despite a reforming Headmaster, the School's governing body, the Provost and Fellows, has not yet countenanced the inclusion of Magic, Witchcraft and Wizardry into the curriculum.

A consequence has been that some eligible boys from families with historic links to the College have withdrawn from the List, opting for the increasingly prestigious Hogwarts School. One such is Justin Finch-Fletchley, housemate of Harry Potter at Hufflepuff<sup>[2]</sup>. A half- blood<sup>[3]</sup> Muggle Justin was put down for Eton at birth but was withdrawn when offered a place at Hogwarts in 1991.

Harry and Justin's first meeting is chronicled in "Harry Potter and the Chamber of Secrets"

[1] A Muggle is a person who lacks any sort of magical ability and was not born into a magical family. Harry himself was a half-blood [3]

[2] Hufflepuff boarding House is one of four at Hogwarts. Head of House, Pomona Sprout, Professor of Herbology

[3] a half-blood is the son of a full Muggle and of a witch



## Useful Numbers

<b>Charteris Club</b>	Julie or Jackie	07598 565091
<b>Churches</b>	St John the Evangelist (Vicar)	01753 852268
	Our Lady of Sorrows, Eton Court	01753 542862
<b>Community Warden</b>		01628 685636
<b>Council Offices, Eton</b>	Bob Austen, Town Clerk	01753 860377
<b>Councillor (RBWM)</b>	Samantha Rayner	07811 974442
<b>Emergency</b>	Fire/Ambulance/Police	999
<b>Eton College</b>		01753 370100
<b>Eton Community Association</b>	Chair	07734 073117
<b>Eton Porny School</b>		01753 861995
<b>Eton Pre-School</b>		01753 850842
<b>Healthcare</b>	Fast Medical Help, Non-Emergency (NHS)	111
	Doctors	
	South Meadow Surgery (24 hr line)	01753 833777
	(Appointments)	01753 832332
	Eton Pharmacy	01753 863819
	Hospitals	
	King Edward VII Outpatients, Windsor	01753 860441
	Prince Charles Eye Unit, KE VII Casualty	01753 636359
	Wexham Park Hospital	01753 633000
	Wexham Park A& E	01753 634017
	Upton Hospital, nr Slough – Walk-in unit	01753 821441
	Heatherwood & St. Marks Minor Injuries units	01753 877805
	Heatherwood Hospital	01344 623333
	St. Marks Outpatients	01628 632012
<b>Library</b>	Mobile	07766 366719
	Renewal Hotline	0303 123 0035
<b>Natural History Museum</b>	Eton (curator)	01753 370602
<b>Police</b>	Crime in Progress	999
	Non-Emergency	101
<b>River Authority</b>	Environment Agency (gen. enquiries)	03708 506 506
	Floodline	0345 988 1188
<b>Royal Borough Of Windsor And Maidenhead</b>	(customer care)	01628 683800
	24 hour line for key services – report illicit actions, late night noise, dangerous structures, etc.	01753 853517
<b>Swan Support</b>		07968 868172



# ACADEMY

INSURANCE  
SERVICES LTD

*Independent & Approachable Local Insurance Broker*

Specialists in:

**Motor Insurance**  
**Home Insurance**  
**Van Insurance**  
**Taxi Insurance**  
**Business Insurance**  
**Fleet Insurance**  
**Commercial Insurance**  
**Landlord Insurance**  
**And lots lots more ...**

**Call:** 01753 521 216 or 0800 083 9885  
[www.academyinsurance.co.uk](http://www.academyinsurance.co.uk)

Academy Insurance Services Ltd are authorised  
by the Financial Conduct Authority

**Academy Insurance**  
**2nd Floor, Rafts Court**  
**Brocas Street**  
**Eton, Berkshire**  
**SL4 6RF**

# Taking Council

*Bob Austen, Town Clerk, Eton Town Council*

*Tel: 01753 860377*

*email: [clerk@etontc.uk](mailto:clerk@etontc.uk)*



Since my last article in Eton Matters, when I reported on the recruitment of Cllrs Malcolm Alexander and Margaret Hayes-Powell to the Council, there have been two further changes to the Council with the addition of James Stanforth for the Eton ward, replacing George Fussey, and Nik Howarth for the Eton Wick ward, replacing Jake Hemming who had retired for family reasons.

James is an employee of Eton College and we were delighted to welcome him onto the Council, continuing the policy of including a representative from the College. Nik is a retired executive and is an active member of the Eton Wick community.

In recent months, the Council has been active in the following areas in Eton:

- Progressing development plans for South Meadow Lane Recreation Ground pavilion, now under the direction of Cllr Malcolm Leach. It is the intention to consult with the community when these plans have been prepared.
- Replanting of Watermans Arms, Jubilee Square and Baldwins Bridge flower beds.
- Challenging RBWM Planning over planning and enforcement issues in the town, including hosting a meeting in the Council Chamber in August with RBWM officers and councillors.
- Financially supporting the anti-social behaviour initiative introduced by Eton Community Association.
- Pursuing ownership/responsibility details for the public hard/slipway by Windsor & Eton Bridge, a long-running issue which is now being actively progressed by Cllrs Margaret Hayes Powell and Malcolm Alexander. In the meantime, the area will be kept tidy by our regular Eton Greenery contractor.
- Increasing levels of Council transparency with the publication of agendas and minutes/ notes of the meetings of Eton Town Council and its committees and working groups. This information can all be accessed on our website.
- Improving the presentation and accessibility of the website, under the direction of Cllrs Mike Blightman and James Stanforth.
- Regularly monitoring the play area at South Meadow Lane Recreation Ground to ensure all is Covid safe. This is being undertaken by Cllr Douglas Hill.
- Liaising with Eton College over the management of the grounds and the brook at Barnes Pool. This is being handled by Cllr Derek Bishop as the Eton Town Council representative on the Barnes Pool Development Team.

I am now working some days in the Council Offices, usually Tuesdays and Fridays and working from home on Wednesdays and Thursdays. This reduces my exposure to Covid and the experience of lockdown proved that my attendance in Eton is not essential.





## *Eton within the Borough*

*Samantha Rayner*

*RBWM Councillor for Eton and Castle*

The High Street is vibrant and looking great. The local area has significantly benefited from people in the UK remaining at home for holidays and short stays. The great care and attention residents and businesses put into Eton is a huge factor in its success. It's fantastic to see new businesses establish in the last months too. Thank you to everyone who works so hard to keep Eton beautiful.

In the RBWM council we are working significantly on the climate strategy to make improvements with residents in the way we live our lives to make it better. The bins collections will have changed by the time you read this to fortnightly for general waste and textiles. The recycling and food waste remains weekly. Evidence shows that this gives better recycling rates and so also means less general waste. This is following the pattern of surrounding authorities. Much of Eton will remain weekly as the black bags and communal bins are still collected weekly.

Next year we will be celebrating Her Majesty's Platinum Jubilee and there are many exciting plans make it incredibly special locally, especially during the 4 days of Bank Holiday in June. We all have something to look forward to and commemorate an exceptional Monarch who is dearly loved and admired.

As the winter approaches please do keep safe and well and take precautions with Covid including regular lateral flow testing.

If you need any help or support please contact your 3 local ward councillors, it's our enormous privilege to represent Eton.

### Contact your Councillors

Cllr. Samantha Rayner    email: [cllr.s.rayner@rbwm.gov.uk](mailto:cllr.s.rayner@rbwm.gov.uk)    phone: 07811 974442

Cllr. John Bowden    email: [cllr.bowden@rbwm.gov.uk](mailto:cllr.bowden@rbwm.gov.uk)    phone: 07905 906957

Cllr. Shamsul Shelim    email: [cllr.shelim@rbwm.gov.uk](mailto:cllr.shelim@rbwm.gov.uk)    phone: 07958 412650

## Eton Matters - We Need Your Stories

We need you to contribute to this magazine!

Tell us about your interests, any family associations you have with Eton past or present, the history of Eton or any thoughts and observations about the local environment.

Email: [editor@etoncommunity.co.uk](mailto:editor@etoncommunity.co.uk)

CELEBRATE  
CHRISTMAS IN

# Eton



2021

**THURSDAY 18TH NOVEMBER**

**Food stalls, fun-fair rides, music,  
dancing and all the fun of Christmas!**

Kicking off in and around Jubilee square from 5pm

The Chapel service is at 6pm followed by  
a Christmas procession with Father Christmas

Watch the Christmas lights switch  
on in Jubilee Square at 7pm

***Meet Father  
Christmas and  
his Reindeer!***

Tickets for the Chapel service will be available from  
the Eton Information Centre, Eton Premier Stores and  
Eton Stationers from 1st November

THIS IS AN ETON COMMUNITY ASSOCIATION EVENT  
[www.etoncommunity.co.uk](http://www.etoncommunity.co.uk) | [secretary@etoncommunity.co.uk](mailto:secretary@etoncommunity.co.uk)

*Sometimes adversity brings opportunities.*

During Covid-19 closures I had time to develop our Hot Chocolate Connoisseur Menu - Come and Enjoy! - Chef Sybil

**PICK YOUR INDULGENCE FROM OUR**

## Hot Chocolate Connoisseur

**THICK ITALIAN  
HOT CHOCOLATE**

**BELGIAN CHOCOLATE  
& CREAM**

**BELGIAN WHITE  
CHOCOLATE & ESPRESSO**

**BELGIAN RUBY  
CHOCOLATE & CREAM**



**FREOH 'N' FINE**  
NATURAL FOOD. AMAZING COFFEE  
7 HIGH STREET, ETON, SL4 6AS

# GVG

THE ACCESSORIES THAT GIVE BACK

LEATHER HANDBAGS AND ACCESSORIES

HANDMADE IN ETON

10% OF EVERY PURCHASE DONATED  
TO CHARITIES

FIND OUT MORE AT  
[WWW.GVGACCESSORIES.COM](http://WWW.GVGACCESSORIES.COM)

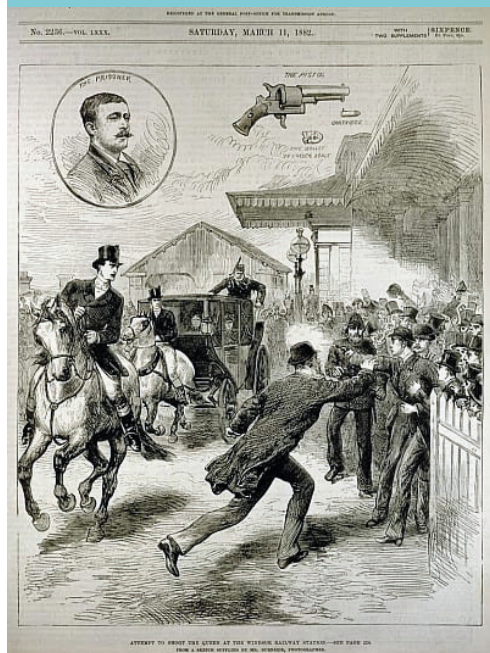
FREE DELIVERY FOR ETON  
USE CODE 'LOCALETON'





# Eton Connection - Attempted Assassination of Queen Victoria

Brian Hoare - Former Eton Resident



At 4.30 pm on 2nd March 1882, Queen Victoria, accompanied by her daughter Princess Beatrice, took her train from Paddington to Windsor. Arriving at 5.25pm they alighted and walked across to the awaiting closed carriage. As they entered, a single gunshot sounded above the noise from the waiting spectator crowd. From almost point blank range the shot missed its target. Reportedly armed only with an umbrella, one of two top hatted Eton schoolboys amongst the spectators, Gordon Wilson, struck the pistol in the hand of the gunman as his school friend Leslie Murray Robertson sought to restrain him and they prevented an attempted assassination becoming a reality.

Subsequently, in her own words, Queen Victoria stated *"There was a sound, of what I thought was an explosion from*

*the (train) engine; but in another moment I saw people rushing about."*

The attempted assassin, Roderick Maclean, was rescued from the angry crowd by police and immediately arrested by Superintendent Hayes, to whom he said *"I have done it from starvation"*



Maclean, a Scotsman aged 27, stated in interrogation, that he had travelled from Portsmouth *"driven by hunger"*. He was charged with High Treason and appeared before Berkshire Assizes on 20 April 1882 and pleaded Not Guilty. During the trial it emerged that he had suffered serious head injuries in 1866 and since had been declared insane. He was found Not Guilty but Insane and committed to an asylum for life, where he died in 1921.

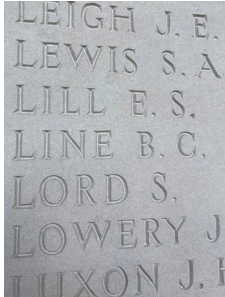
Three days after the attempt on her life the Queen invited the whole of Eton College to Windsor Castle where, in a circle formation, the School gathered for an address by the Queen expressing her gratitude for the part played by the Etonians in thwarting the attempt on her life.

References: The Illustrated London News Saturday 11 March 1882; Windsor and Eton Express 22 April 1882; Windlesora 26

# Great Uncle Ben

*Roger Line - Eton Resident & Businessman*

I have always been interested in the part my relatives played during both wars. My great uncle Ben especially interested me as he was killed during the battle of Arras which was one of the bloodiest of WW1. He was a gunner with 71st Brigade of the Royal Field Artillery and was killed on the 28th April 1917 shortly after he arrived in France.



I decided to try to find out more where he had fought and was killed. He has no known grave, simply commemorated with honour on the wall at Arras Memorial. After researching the war diaries, I managed to locate the exact location where he was on the day he died, so set off to France to locate the spot. This was done by co-ordinates as the area known as Le Fosse farm was destroyed during the battle.

What made it more interesting is the fact that within our own small business we are approved contractors for the Commonwealth War Graves Commission, and I travel to many memorials throughout the UK. I have a tremendous respect for what the Commission does. It is a privilege to be involved in ensuring those who at the call of King and Country left all that was dear to them, and gave their lives, are remembered at these beautifully maintained memorials.

In France I stayed in Arras and visited the new Commonwealth Graves workshops. This is where we undertake many aspects of maintenance from engraving headstones, to hand making new gate hinges. The mortuary is also located here. Their work is to identify and bury any new bodies which are unearthed mainly through farming and building works. Bodies are found most weeks and several mass graves of several hundred soldiers both English, German and other nationalities unearthed in recent times. The care, attention and respect that is given to every soldier is amazing.

Using the co-ordinates I drove to the exact location and stood in awe in what was a very



surreal experience. It was on the side of a road in a peaceful location amidst the beautiful French countryside. It was very flat and green, and it was hard to imagine the horrors of war that occurred here. I paid my respects and visited a nearby church where there are the graves of 6 unknown soldiers and wondered if one of them was him, something I will never know.



# **ETON CYCLES REPAIRS**

**077 100 43069**

[www.etoncycles.co.uk](http://www.etoncycles.co.uk)  
[info@etoncycles.co.uk](mailto:info@etoncycles.co.uk)

**Property Maintenance and Repairs, Inside or Outside**

**Painting and Decorating, Picture / Mirror Hanging**

**and much much more .....**

***My Handyman***

**Your Local (Eton Wick) Handyman, for All Those Little Jobs**

**E mail [Help@My-Handyman.Biz](mailto:Help@My-Handyman.Biz)**

**mobile 07582 855712**

**home 01753 853828**



# *Walking the King's Highway to Dorney*

The King's Highway to Dorney was the medieval route that followed closely today's Brocas Street and Meadow Lane. Walking this route today we pass our well known named meadows and not so well known Saxon named arable fields identifying to locals where their strips of land were to cultivate to provide for their families, much like a medieval 'what3words' app. (Field map is on Eton Wick History website: [etonwickhistory.co.uk/2015/11/the-parish-boundaries.html](http://etonwickhistory.co.uk/2015/11/the-parish-boundaries.html)) The field names include a description like Gravel or Mill with the second part often a type of enclosure like Close or Shot although many wouldn't have been enclosed or even marked.

The King's Highway heads down Brocas Street (Brocas Lane) which cut through a field called Hog's Close, where Atherton Court flats are today, turning into the now Meadow Lane round the Waterman's Arms (built 1682). The diagonal road north of Waterman's was made in the 1960s. Roughly where the arch is through Eton Thameside was access to a ferry across to Bier Lane (River St.).

On the left was a field called Spurr's Close where Emlyn's Buildings and Brocas Terrace were built in the mid-1800s and is still visible as the area of long grass in front of the homes from the Brocas (Eton Mede) riverside meadow (granted to the Brocas family in the 14th century by the Crown). On the opposite side of the Highway is South Meadow (Sud Mede). Continuing on to where South Meadow Lane (Mill Lane) leaves to the right we would probably have had to ford the stream which feeds Barnes Pool (culverted in the 1840s) to continue on Meadow Lane (Cuckoo Weir Lane).

Square Close (cover photo last issue), the eastern end of South Field, 10 Acre Shot (The Rec.) behind are on the north side with Gravel Close (below) opposite to the river. Gravel



was excavated from this field, now divided by the railway viaduct (built mid 1800s), probably for building of the College and making up roads. Visibly dropping from the Brocas because of the excavations, on this flat area to the viaduct the summer fair used to be located till the 1950s. West of the viaduct was left undulating which we used as a bike track and called the Hilly Field until levelled in the 1970s.

## *Peter Eaton - Eton Resident*



On the boundary is the east arm of the return from Cuckoo Weir where a mill mentioned in the Domesday Book (commissioned December 1085) stood. The corrugated iron fence and entrance (left) to the Sandy Public Swimming Baths (closed late 1950s), can still be seen from the footpath south of the Highway. Enclosed by the west arm is Cuckoo Weir Close with, the riverside bridges being called Upper and Lower Bargeman's Bridges. To the north are Mill Furlong and Mill Piece and between the Highway and the weir stream is Outer Lower Ward. The west part of the weir stream was a College bathing place where in the early 20th century a swimming baths was built by Eton College called Ward Mead after the Wards meadows complex.

Following on from the 1960s Royal Windsor Way you come into probably the original route of the Highway with its high banks and trees (cover photo) on either side, giving a sense of what it may have been like in the Middle Ages.

Coming into the open fields to Lower Ward, connected to Clewer Point Meadow (Great Inner Ward) by Long Bray Bridge (Chinese Bridge). Corn and Grass Gabbetts are to the right with the dip of Rush Pits still clearly visible.

Warwick Close ran along the river back with Warwick Eyot (Athens bathing place), then an island. The Highway to Boveney (Boveney/Eton boundary at Bell Lane), passing between many

further strangely named fields, followed roughly the footpath to Hayward's Mead (named after the field), dividing midway towards the river and on to Dorney following the current roads.



# Beechwood Interiors

DESIGN | MANUFACTURE | INSTALL

Specialists in Bespoke Cabinetry

Luxury Kitchens & Wardrobes

Handcrafted Fine Furniture

Modern and Traditional Spray Finishes

T: 01753 650506 E: [Info@beechwood-interiors.co.uk](mailto:Info@beechwood-interiors.co.uk)

W: [beechwood-interiors.co.uk](http://beechwood-interiors.co.uk)



Like us on  
Facebook



houzz



FOLLOW US ON  
Instagram

# Vario

Vario Press is delighted to be supporting  
the Eton Community Association.

Creating professional design and print products  
for local businesses and Eton College.

Attention to detail – and service to match.

For more information please contact Peter Alexander at:

Vario Press Ltd

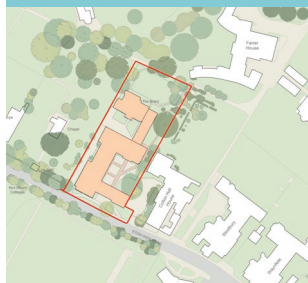
Marish Wharf, St. Mary's Road, Langley, Slough Berkshire SL3 6DA

Tel: 01753 548944 [www.varioupk.com](http://www.varioupk.com)



# New Boarding House

*Ian Mellor - Projects Director, Eton College*



Eton College last built a Boarding House, Villiers House, in 1962. However, I wanted to let the community know of our plans to build a new Boarding House at the Briary (see attached plan). The location was chosen as by far the best option following a review of possible sites within the centre of Eton (boys need to be within reasonable walking distance of all facilities that they will need to use during their day).

We want the building to be of a very high quality and, following an architectural competition, appointed Hopkins architects in early 2020 to design the development for us. The scale of the building will be as our other Houses, accommodating 55 boys, each with their own study bedroom, as well as the four senior staff who will be responsible for the boys' welfare during their time at Eton. It will in addition incorporate the latest best practices in building design including those of sustainability e.g. it will be entirely heated by a ground source heat pump. The attached image provides a representation of what the building will look like when viewed from the Eton Wick Road.



We have already had several discussions with the planning department of the RBWM in which we believe we have successfully addressed each of the relevant planning policies and therefore now intend to submit a formal planning application before the end of this year (although construction isn't intended to start before summer 2024). If Covid restrictions allow, we would intend to make further details available to the community but, in the interim, it would be useful if you could please send any initial comments that you may have to [briary@etoncollege.org.uk](mailto:briary@etoncollege.org.uk)

On a different topic, a few people have asked me about progress with our new sports facilities. The first phase of the development, 'Athens', is almost complete despite the peculiar times that we have been living through over the past 18 months. This first phase consists of a new swimming pool and large sports hall. Construction work should finish in November and, after a period of familiarisation, the facilities will come into operation in the New Year. Use of the facilities will be open to state primary schools in the area and residents who live in Eton and Eton Wick.



# Eton's Cemetery

*Derek Ledger - Eton Resident*

Eton cemetery, one of the most important in historic Bucks and significant as an early garden cemetery, was designed for Eton College around 1844 by London architect James Deason along with the adjacent house, Burnham Thorpe, before starting restoration work on College Chapel. It is an early example of the geometric approach adopted for many later cemeteries. The cemetery was consecrated by the Bishop of Lincoln in April 1846.

By 1897 the cemetery had been extended at the northwest corner by half an acre to total 1.5 acres after permission for the land was given by Eton College.



The buildings comprise a chapel and a lych gate in early English style with a brick and flint boundary walls with an extensive collection of memorials set in a grid pattern layout. The cemetery is a typical example of successive burials since the 1840s and includes College members, staff, the war dead and town residents.

The main entrance is at the centre of the roadside early English flint wall by a lych gate which has a steeply pitched roof, flint and stoned coped gable ends and iron

crosses. The wooden lattice gates are inscribed 'In memory of the Eton CLB (Church Lads Brigade) Club old members who fell in the Great War 1914-18 and 2nd WW 1939-45'.

The Anglican chapel again in Early English style of flint and stone is the focal point of the cemetery. The gravestones, plaques, memorials, and other tributes survive largely intact and include many with iron railings and interesting inscriptions. The chapel and graveyard are well worth a visit.



**richersounds**  
Experience Better

Proudly  
employee  
owned

**LOWEST  
PRICE  
GUARANTEED\***

# Your local TV, home cinema & hi-fi experts!



Claim any or all of these voucher offers:



**£10 OFF**

When you spend £100 in-store\*\*

**£50 OFF**

speakers over £500\*\*

**£50 OFF**

any TV over £1000\*\*

T&Cs apply.\*\* Offers available in-store or over the phone.

## Ask us about our custom installation service

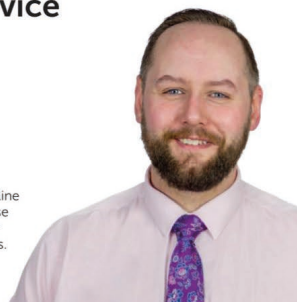
40 High Street, Eton, SL4 6BD | 0333 900 0087

For store info and opening times, please visit:

**[www.richersounds.com](http://www.richersounds.com)**

Sam, Windsor & Eton Store Manager. 8th Year of Service.

\* Lowest Price Guaranteed, we'll beat any genuine advertised price, voucher offer or bundle deal, online & in-store, by up to £100. Products must be brand new, boxed, carry a similar guarantee (in the case of TVs, 5 or 6 years from a competitor) and be in stock at time of purchase. Comparisons to be fair and net of any voucher / trade-in offer. Other reasonable T&Cs apply. Ask in-store for more details.



01753 625 101

[sales@warrenproperty.co.uk](mailto:sales@warrenproperty.co.uk)

[warrenproperty.co.uk](http://warrenproperty.co.uk)

WARREN

property matters

Achieving the best rent,  
from the best tenants,  
in the shortest time...

